

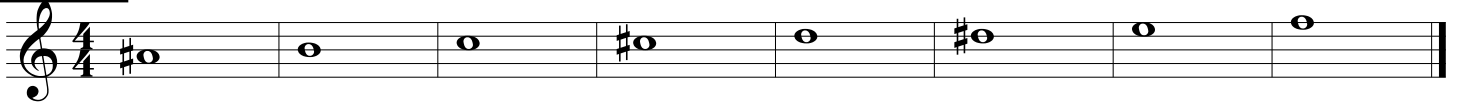
Flute

Chromatic Warm-Up

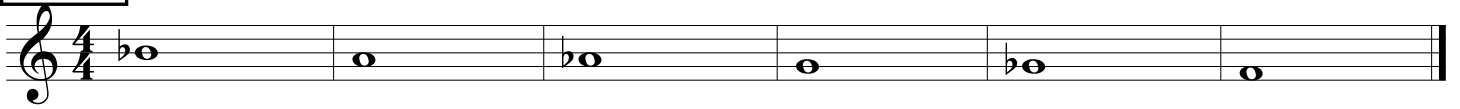
1. (12-5)



2. (5-12)



3. (5-0)



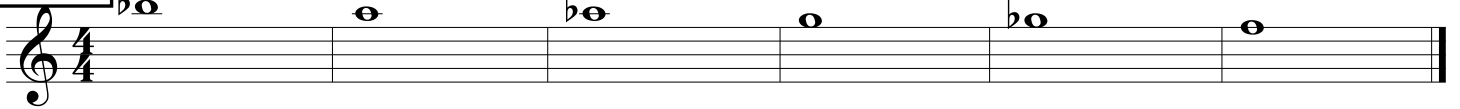
4. (0-5)



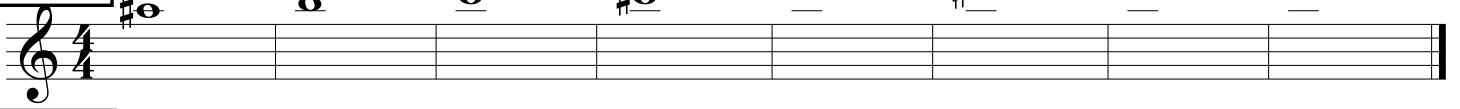
5. (12-17)



6. (17-12)



7. (17-24)



8. (24-17)



9. (0-17-0)



Flute

Chromatic Warm-Up (pg. 2)

10. (0-24-0)

Exercise 10 consists of three staves of music in 2/4 time. The first staff contains a sequence of eighth notes: C4, D4, E4, F4, G4, A4, B4, C5, B4, A4, G4, F4, E4, D4, C4. The second staff contains a sequence of eighth notes: C4, D4, E4, F4, G4, A4, B4, C5, B4, A4, G4, F4, E4, D4, C4. The third staff contains a sequence of eighth notes: C4, D4, E4, F4, G4, A4, B4, C5, B4, A4, G4, F4, E4, D4, C4.

Woodwind Lip Slur Warm-Up #1

Woodwind Lip Slur Warm-Up #1 consists of three staves of music in 4/4 time. The first staff contains a sequence of eighth notes: C4, D4, E4, F4, G4, A4, B4, C5, B4, A4, G4, F4, E4, D4, C4. The second staff contains a sequence of eighth notes: C4, D4, E4, F4, G4, A4, B4, C5, B4, A4, G4, F4, E4, D4, C4. The third staff contains a sequence of eighth notes: C4, D4, E4, F4, G4, A4, B4, C5, B4, A4, G4, F4, E4, D4, C4.

Woodwind Lip Slur Warm-Up #2

Woodwind Lip Slur Warm-Up #2 consists of three staves of music in 4/4 time. The first staff contains a sequence of eighth notes: C4, D4, E4, F4, G4, A4, B4, C5, B4, A4, G4, F4, E4, D4, C4. The second staff contains a sequence of eighth notes: C4, D4, E4, F4, G4, A4, B4, C5, B4, A4, G4, F4, E4, D4, C4. The third staff contains a sequence of eighth notes: C4, D4, E4, F4, G4, A4, B4, C5, B4, A4, G4, F4, E4, D4, C4.

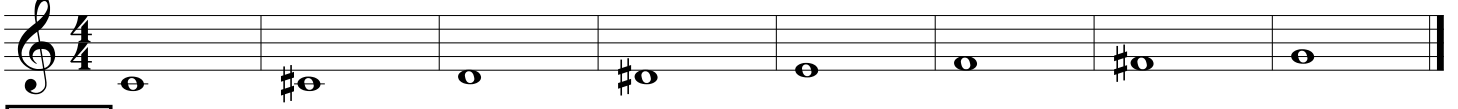
Clarinet

Chromatic Warm-Up

1. (12-5)



2. (5-12)



3. (5-0)



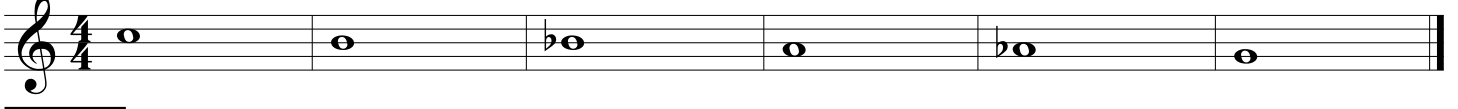
4. (0-5)



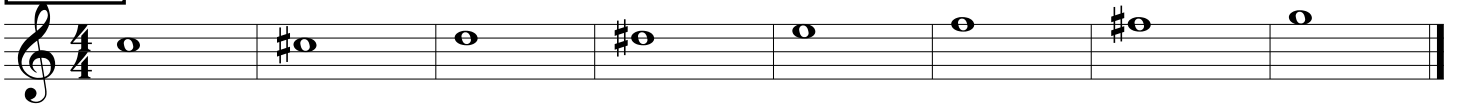
5. (12-17)



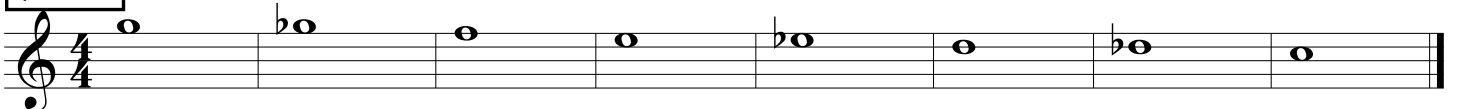
6. (17-12)



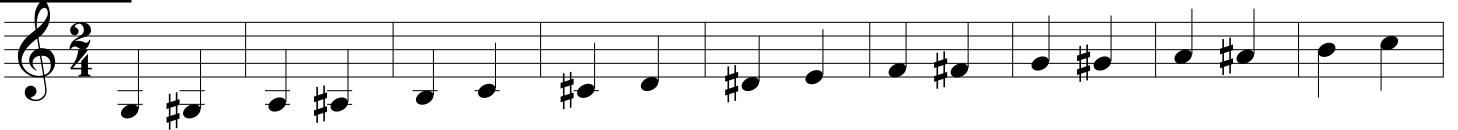
7. (17-24)



8. (24-17)



9. (0-17-0)



Clarinet

Chromatic Warm-Up (pg. 2)

10. (0-24-0)

Musical notation for exercise 10, consisting of two staves of music in 2/4 time. The first staff starts on a treble clef with a key signature of one sharp (F#) and a 2/4 time signature. The second staff continues the chromatic scale in the same key signature and time signature, ending with a fermata on the final note.

Woodwind Lip Slur Warm-Up #1

Musical notation for 'Woodwind Lip Slur Warm-Up #1', consisting of three staves of music in 4/4 time. The first staff is in C major, the second in Bb major, and the third in Ab major. Each staff contains four measures of eighth-note slurs.

Woodwind Lip Slur Warm-Up #2

Musical notation for 'Woodwind Lip Slur Warm-Up #2', consisting of three staves of music in 4/4 time. The first staff is in C major, the second in Bb major, and the third in Ab major. Each staff contains four measures of eighth-note slurs.

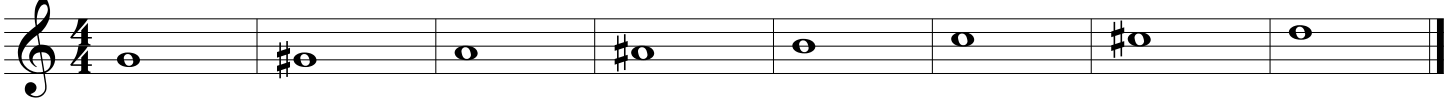
Alto Sax / Bari Sax

Chromatic Warm-Up

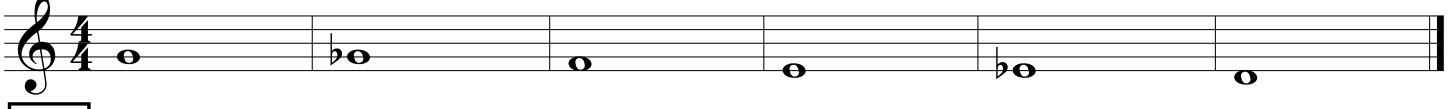
1. (12-5)



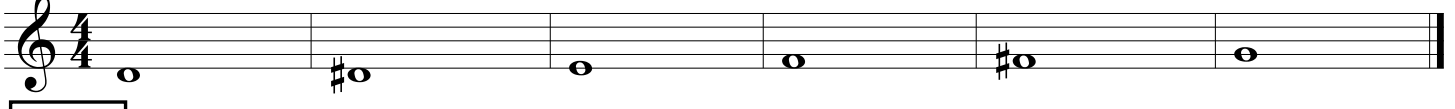
2. (5-12)



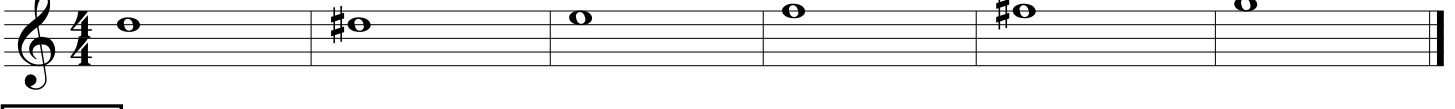
3. (5-0)



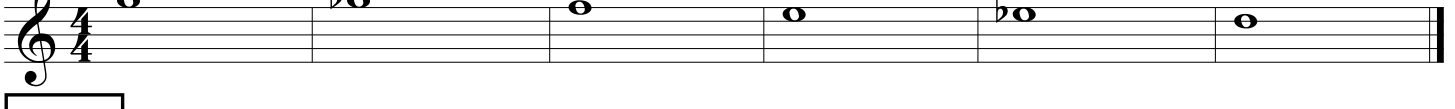
4. (0-5)



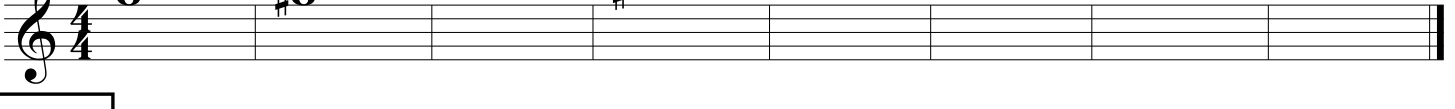
5. (12-17)



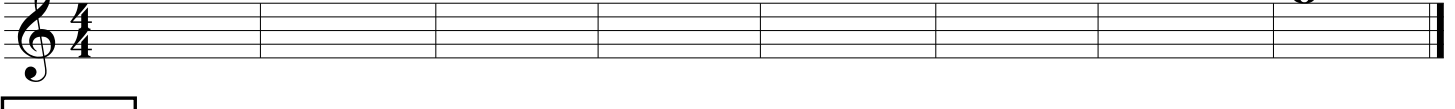
6. (17-12)



7. (17-24)



8. (24-17)



9. (0-17-0)



Alto Sax / Bari Sax

Chromatic Warm-Up

10. (0-24-0)

Musical notation for exercise 10, consisting of three staves in 2/4 time. The first staff starts on a treble clef with a key signature of one sharp (F#) and contains a chromatic scale from G4 to G5. The second staff starts on a treble clef with a key signature of one sharp (F#) and contains a chromatic scale from F#4 to F#5. The third staff starts on a treble clef with a key signature of two flats (Bb) and contains a chromatic scale from Bb4 to Bb5.

Woodwind Lip Slur Warm-Up #1

Musical notation for exercise 11, consisting of three staves in 4/4 time. The first staff starts on a treble clef with a key signature of one sharp (F#) and contains a series of eighth-note slurs. The second staff starts on a treble clef with a key signature of one sharp (F#) and contains a series of eighth-note slurs. The third staff starts on a treble clef with a key signature of two flats (Bb) and contains a series of eighth-note slurs.

Woodwind Lip Slur Warm-Up #2

Musical notation for exercise 12, consisting of three staves in 4/4 time. The first staff starts on a treble clef with a key signature of one sharp (F#) and contains a series of eighth-note slurs. The second staff starts on a treble clef with a key signature of one sharp (F#) and contains a series of eighth-note slurs. The third staff starts on a treble clef with a key signature of two flats (Bb) and contains a series of eighth-note slurs.

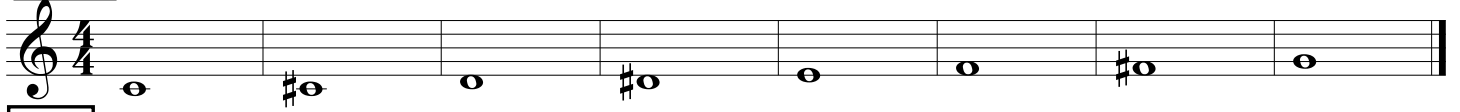
Trumpet

Chromatic Warm-Up

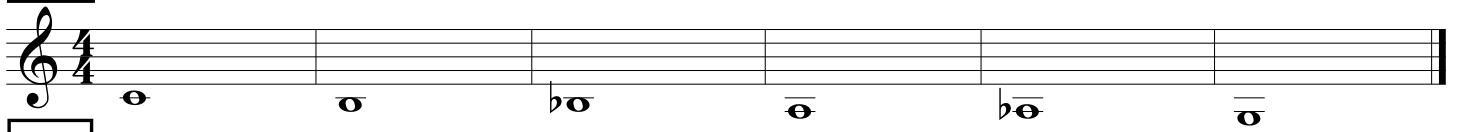
1. (12-5)



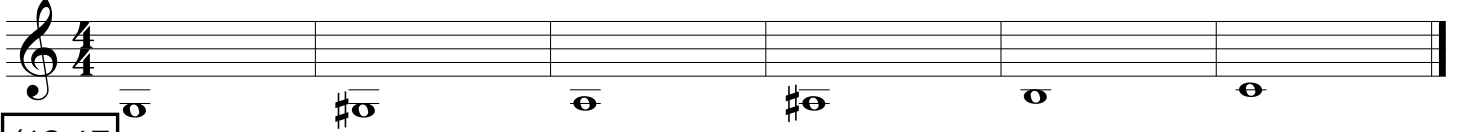
2. (5-12)



3. (5-0)



4. (0-5)



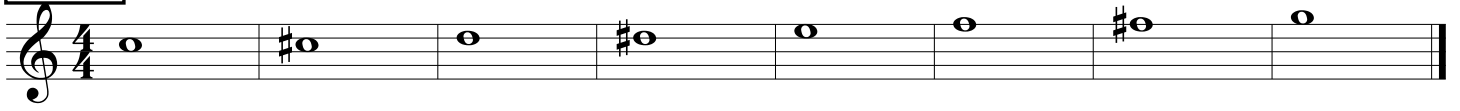
5. (12-17)



6. (17-12)



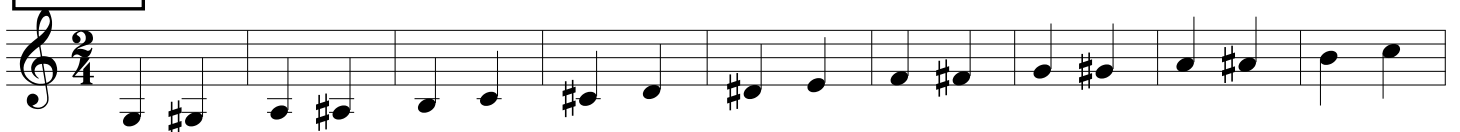
7. (17-24)



8. (24-17)



9. (0-17-0)



Trumpet

Chromatic Warm-Up (pg. 2)

10. (0-24-0)

The first staff is in 2/4 time and contains two lines of chromatic ascending and descending eighth-note exercises. The second staff is in 4/4 time and contains two lines of chromatic ascending and descending eighth-note exercises, ending with a fermata on the final note.

Lip Slur Warm-Up

The first staff is in 4/4 time and features a lip slur exercise with a long slur over a sequence of notes, including some with accidentals. The second staff is in 4/4 time and features a lip slur exercise with a long slur over a sequence of notes, including some with accidentals.

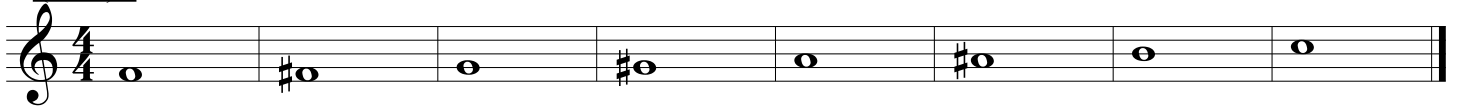
F Horn

Chromatic Warm-Up

1. (12-5)



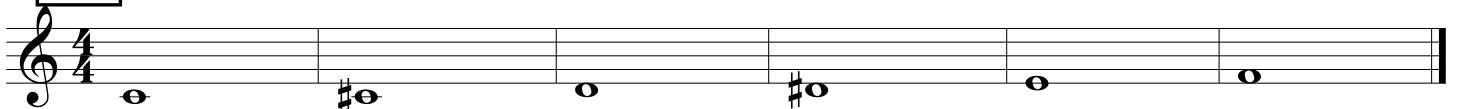
2. (5-12)



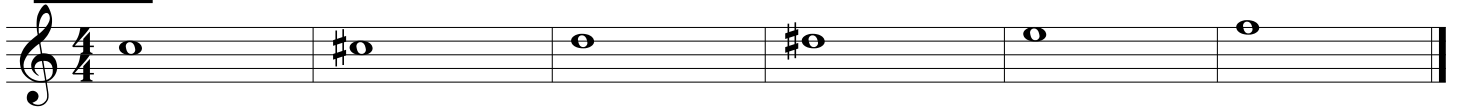
3. (5-0)



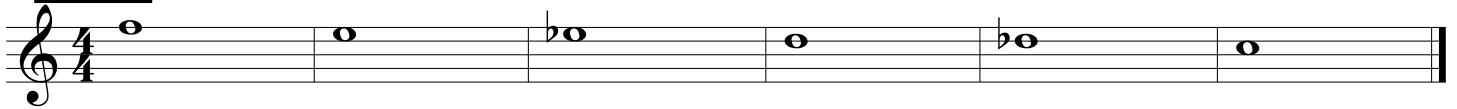
4. (0-5)



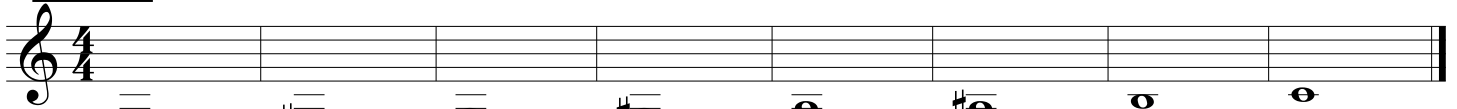
5. (12-17)



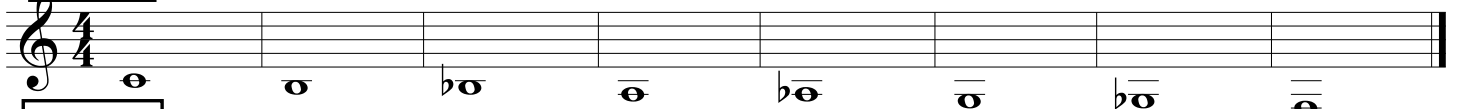
6. (17-12)



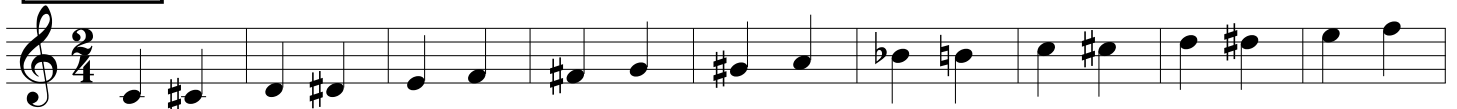
7. (-7 / 0)



8. (0 / -7)



9. (0-17-0)



F Horn

10. (-7 / 17 / -7)

Musical notation for F Horn warm-up exercise 10, measures 1-10. The piece is in 2/4 time. The first staff contains measures 1-4, the second staff contains measures 5-8, and the third staff contains measures 9-10. The notes are: 1. G4, 2. A4, 3. B4, 4. C5, 5. B4, 6. A4, 7. G4, 8. F4, 9. E4, 10. D4.

Lip Slur Warm-Up - Full Band

Musical notation for Lip Slur Warm-Up - Full Band, measures 1-10. The piece is in 4/4 time. The first staff contains measures 1-4, the second staff contains measures 5-8, and the third staff contains measures 9-10. The notes are: 1. G4, 2. A4, 3. B4, 4. C5, 5. B4, 6. A4, 7. G4, 8. F4, 9. E4, 10. D4.

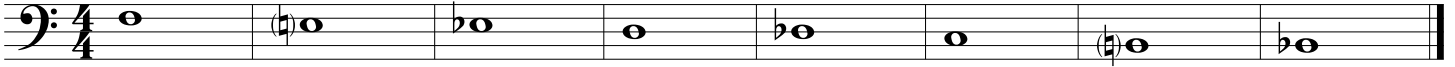
Lip Slur Warm-Up - Horns Only

Musical notation for Lip Slur Warm-Up - Horns Only, measures 1-10. The piece is in 4/4 time. The first staff contains measures 1-4, the second staff contains measures 5-8, and the third staff contains measures 9-10. The notes are: 1. G4, 2. A4, 3. B4, 4. C5, 5. B4, 6. A4, 7. G4, 8. F4, 9. E4, 10. D4.

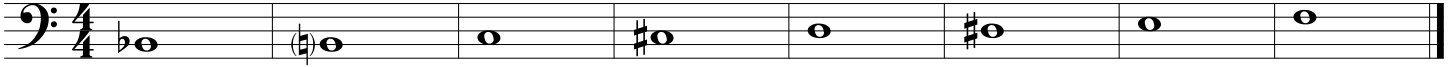
Trombone
Euphonium BC
Bassoon

Chromatic Warm-Up

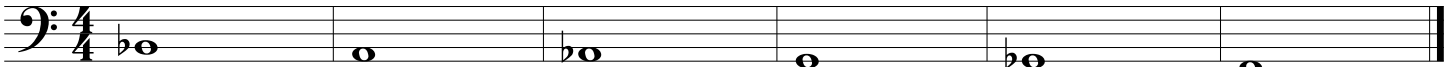
1. (12-5)



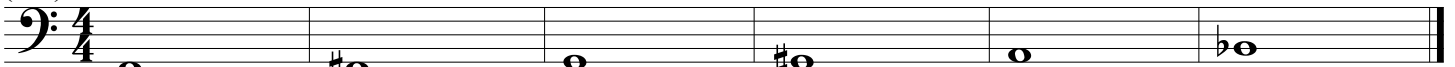
2. (5-12)



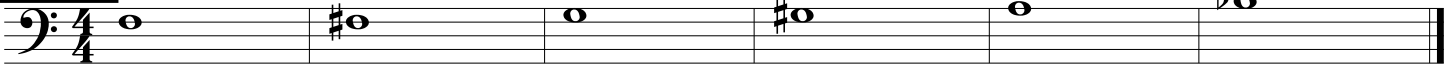
3. (5-0)



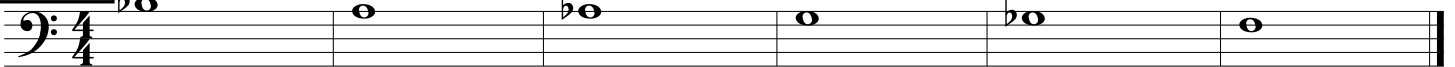
4. (0-5)



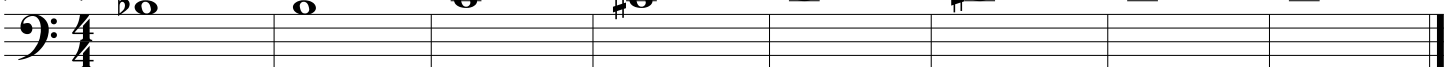
5. (12-17)



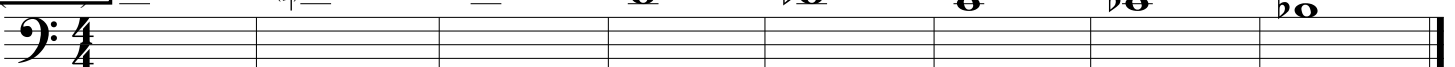
6. (17-12)



7. (17-24)



8. (24-17)



9. (0-17-0)



Trombone/Euphonium/Bassoon Chromatic Warm-Up

10. (0-24-0)

Chromatic warm-up exercise in bass clef, 2/4 time signature. The exercise consists of three lines of music. The first line starts on G2 and ascends chromatically to B2. The second line starts on B2 and descends chromatically to G1. The third line starts on G1 and descends chromatically to E1.

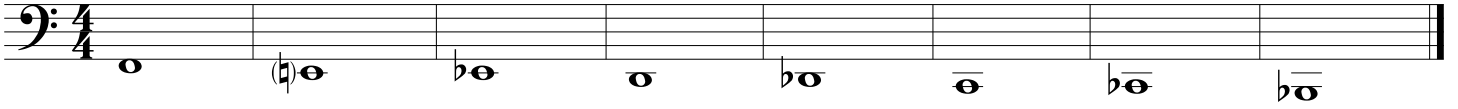
Lip Slur Warm-Up

Lip slur warm-up exercise in bass clef, 4/4 time signature. The exercise consists of two lines of music. The first line features three slurs, each covering a four-measure phrase. The second line features three slurs, each covering a four-measure phrase.

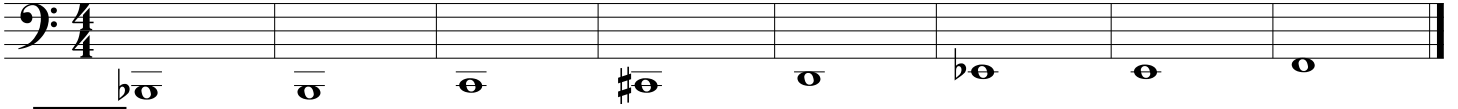
Tuba

Chromatic Warm-Up

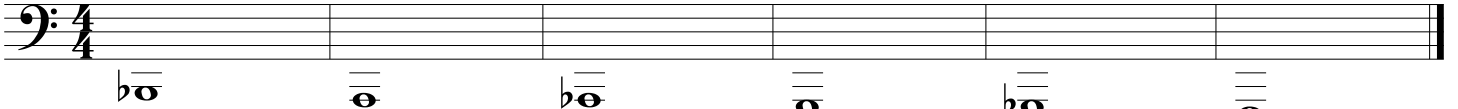
1. (12-5)



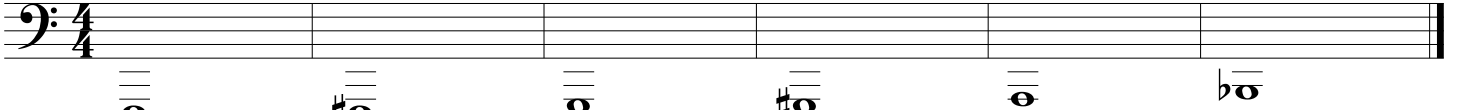
2. (5-12)



3. (5-0)



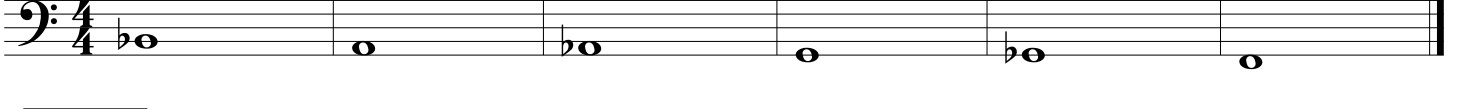
4. (0-5)



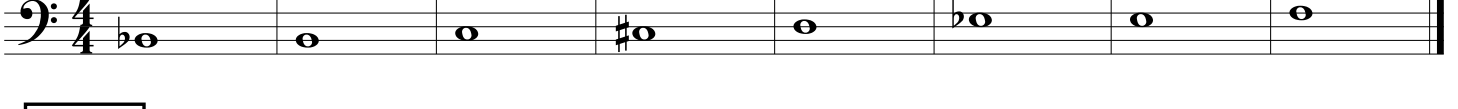
5. (12-17)



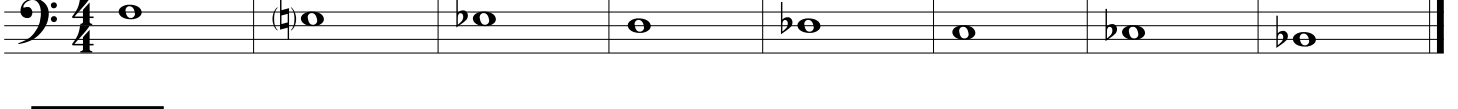
6. (17-12)



7. (17-24)



8. (24-17)



9. (0-17-0)



10. (0-24-0)

Three staves of chromatic warm-up exercises in bass clef, 2/4 time signature. The first staff contains two measures of eighth-note pairs: (F2, F#2), (G2, G#2), (A2, A#2), (B2, B#2), (C3, C#3), (D3, D#3), (E3, E#3), (F3, F#3), (G3, G#3), (A3, A#3), (B3, B#3), (C4, C#4). The second staff contains two measures of eighth-note pairs: (C4, B3), (B3, A3), (A3, G3), (G3, F3), (F3, E3), (E3, D3), (D3, C3), (C3, B2), (B2, A2), (A2, G2), (G2, F2), (F2, E2), (E2, D2). The third staff contains two measures of eighth-note pairs: (D2, C2), (C2, B1), (B1, A1), (A1, G1), (G1, F1), (F1, E1), (E1, D1), (D1, C1), (C1, B0), (B0, A0), (A0, G0), (G0, F0), (F0, E0), (E0, D0).

Lip Slur Warm-Up

Three staves of lip slur warm-up exercises in bass clef, 4/4 time signature. The first staff shows a slur over two measures: the first measure contains eighth notes (F2, G2, A2, B2), and the second measure contains eighth notes (C3, B2, A2, G2). The second staff shows a slur over two measures: the first measure contains eighth notes (F2, G2, A2, B2), and the second measure contains eighth notes (C3, B2, A2, G2). The third staff shows a slur over two measures: the first measure contains eighth notes (F2, G2, A2, B2), and the second measure contains eighth notes (C3, B2, A2, G2).