

Beginning Band Warm Up 2

Breathe from your diaphragm and keep your chin level!

Ms. Addeo

Flute/Oboe

B♭ Clarinet/Trumpet

Alto Saxophone

F Horn

Trombone/Euphonium/Bassoon

Tuba

Xylophone

Concert Snare Drum

FL/Ob.

B♭ Cl.Tpt.

A. Sax.

F Hu.

Tbn.Eph.Bsn.

Tba.

Xyl.

Con. Sn.

FL/Ob.

B♭ Cl.Tpt.

A. Sax.

F Hu.

Tbn.Eph.Bsn.

Tba.

Xyl.

Con. Sn.

27 **H** **I**

FL/Ob.
B♭ Cl./Tpt.
A. Sax.
F. Hn.
Tbn./Eph./Bsn.
Tba.
Xyl.
Con. Sn.

B \flat Clarinet/Trumpet

Beginning Band Warm Up 2

Breathe from your diaphragm and keep your chin level!

Ms. Addeo

A



B



C



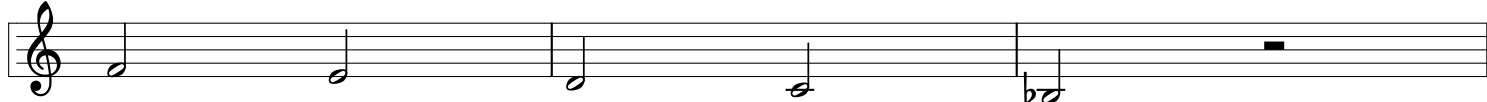
D



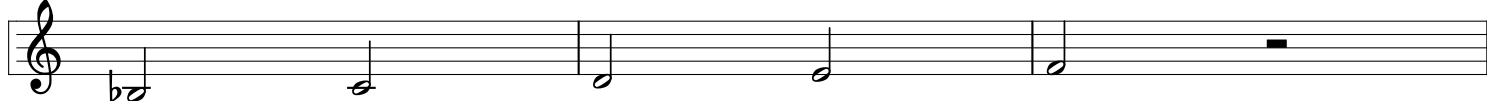
E



F



G



H



I



Alto Saxophone

Beginning Band Warm Up 2

Breathe from your diaphragm and keep your chin level!

Ms. Addeo

A

B

5

C

9

D

13

E

17

F

21

G

24

H

27

I

31

F Horn

Beginning Band Warm Up 2

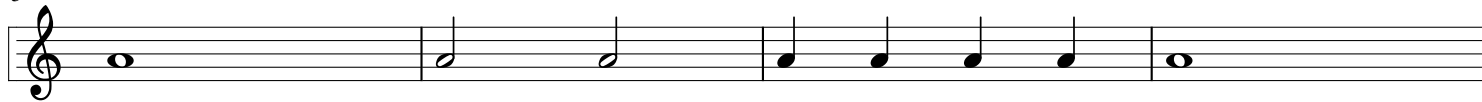
Breathe from your diaphragm and keep your chin level!

Ms. Addeo

A



B



C



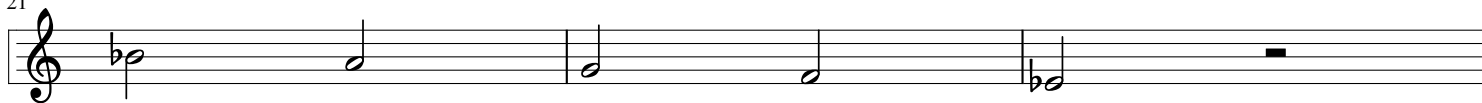
D



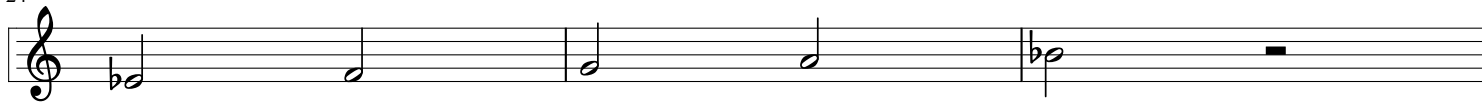
E



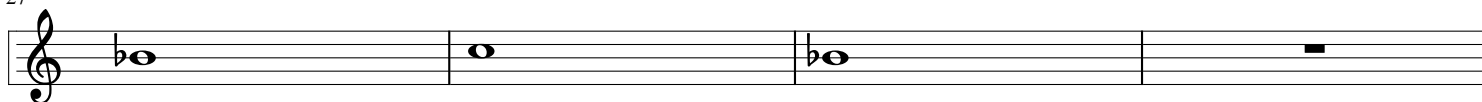
F



G



H



I



Trombone/Euphonium/Bassoon

Beginning Band Warm Up 2

Breathe from your diaphragm and keep your chin level!

Ms. Addeo

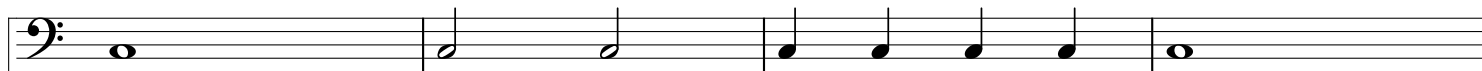
A



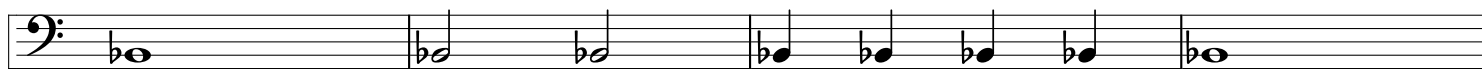
B



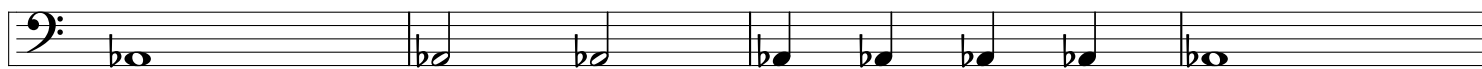
C



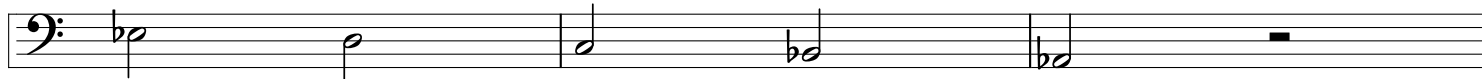
D



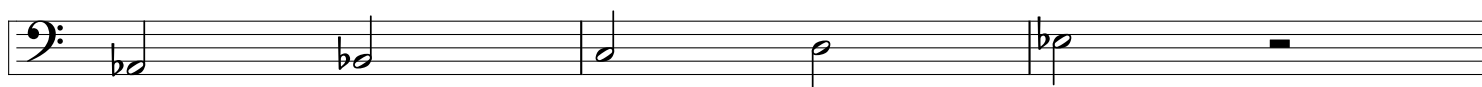
E



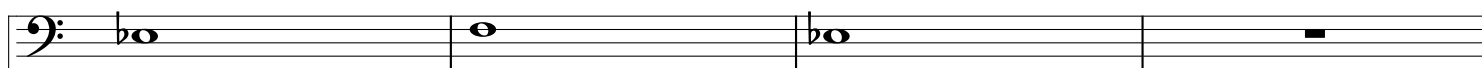
F



G



H



I



Tuba

Beginning Band Warm Up 2

Breathe from your diaphragm and keep your chin level!

Ms. Addeo

A



B



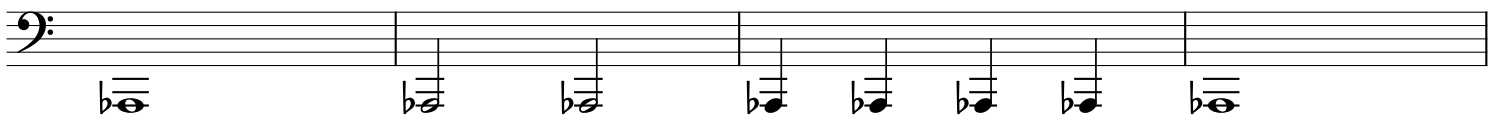
C



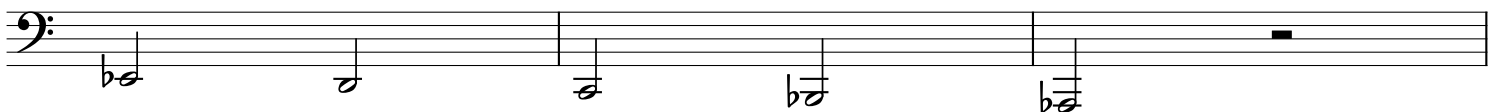
D



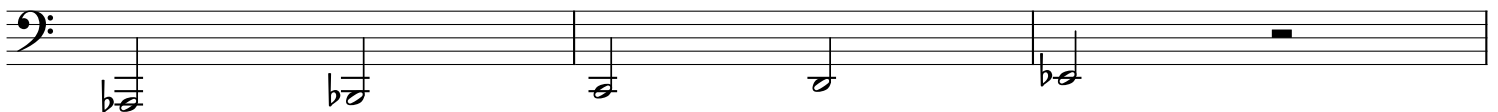
E



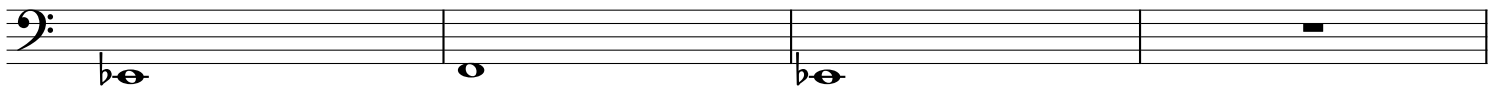
F



G



H



I



34

Xyl.

A musical staff for Xyl. (Xylophone) with a treble clef. It contains a single note on the second line (G4) with a flat sign (Bb4).

Con. Sn.

A musical staff for Con. Sn. (Conga Snare) with a double bar line at the beginning. It contains a quarter note on the first line (C4), followed by a quarter rest, and a quarter note on the first line (C4) with a flat sign (Bb4).